

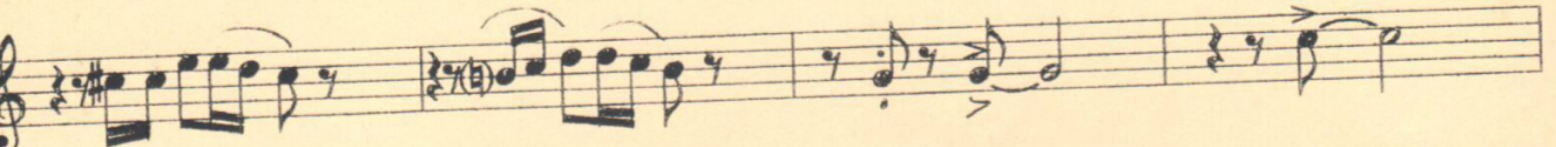
ACARICIAME.

TRANS: CARLOS PENNA.

ENOR SAX.

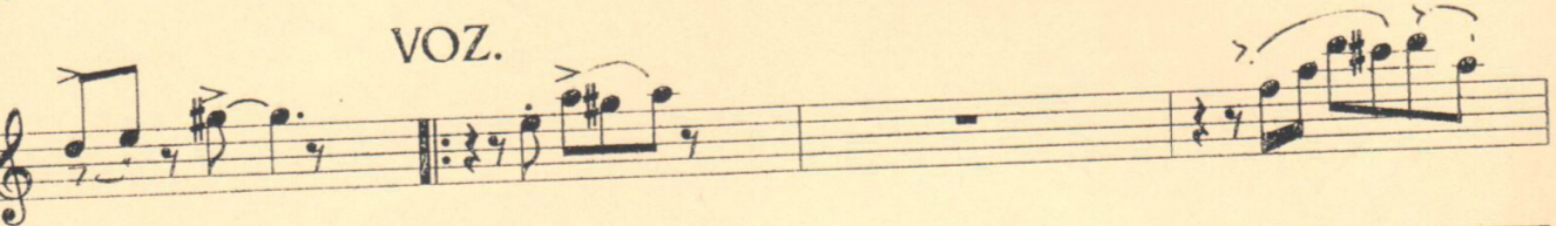


Musical staff for Tenor Saxophone in 4/4 time, starting with a treble clef and a key signature of one sharp (F#). The staff contains a sequence of notes and rests, including a triplet of eighth notes.

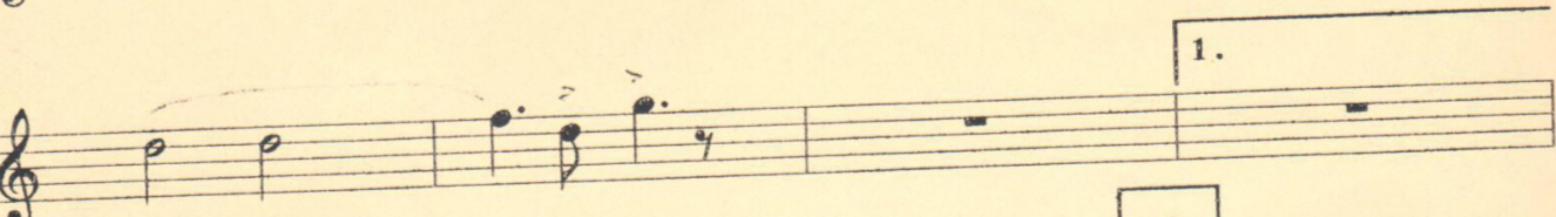


Musical staff for voice, continuing the melody from the saxophone part. It features a treble clef and a key signature of one sharp.

VOZ.



Musical staff for voice, showing a vocal line with a repeat sign and a first ending bracket labeled '1.'.



Musical staff for voice, continuing the vocal line with a first ending bracket labeled '1.'.



Musical staff for voice, featuring a repeat sign and a first ending bracket labeled '1.'.



Musical staff for voice, continuing the vocal line with a first ending bracket labeled '1.'.



Musical staff for voice, concluding the vocal line with a first ending bracket labeled '4'.

MAMBO 4X'S

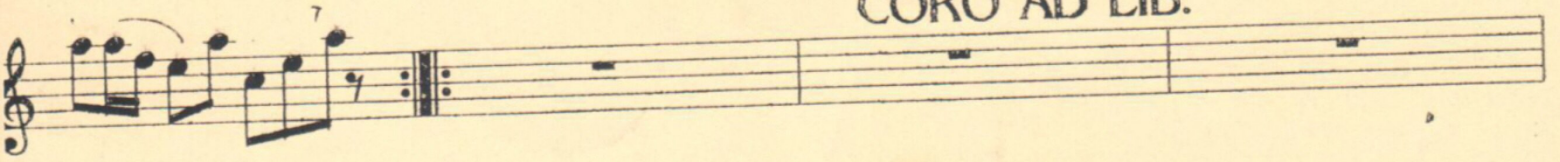


Musical staff for the 'MAMBO 4X'S' section, featuring a treble clef and a key signature of one sharp.

COPY BY : SANTEALO. R. S. INC.

TEL: 781-4587.

CORO AD LIB.



MAMBO II 4X'S



AL MAMBO II Y ⊕ A ⊕

